

ACEA 13th Biennial International Australasian Corrections Education Association Conference Canberra

Developing Systems and Infrastructure to Support Teaching and Learning

Kieran McCann
Education Training and Employment Branch
5 October 2017

Victoria - Prisons Overview

Prison and Community Correctional Services Locations

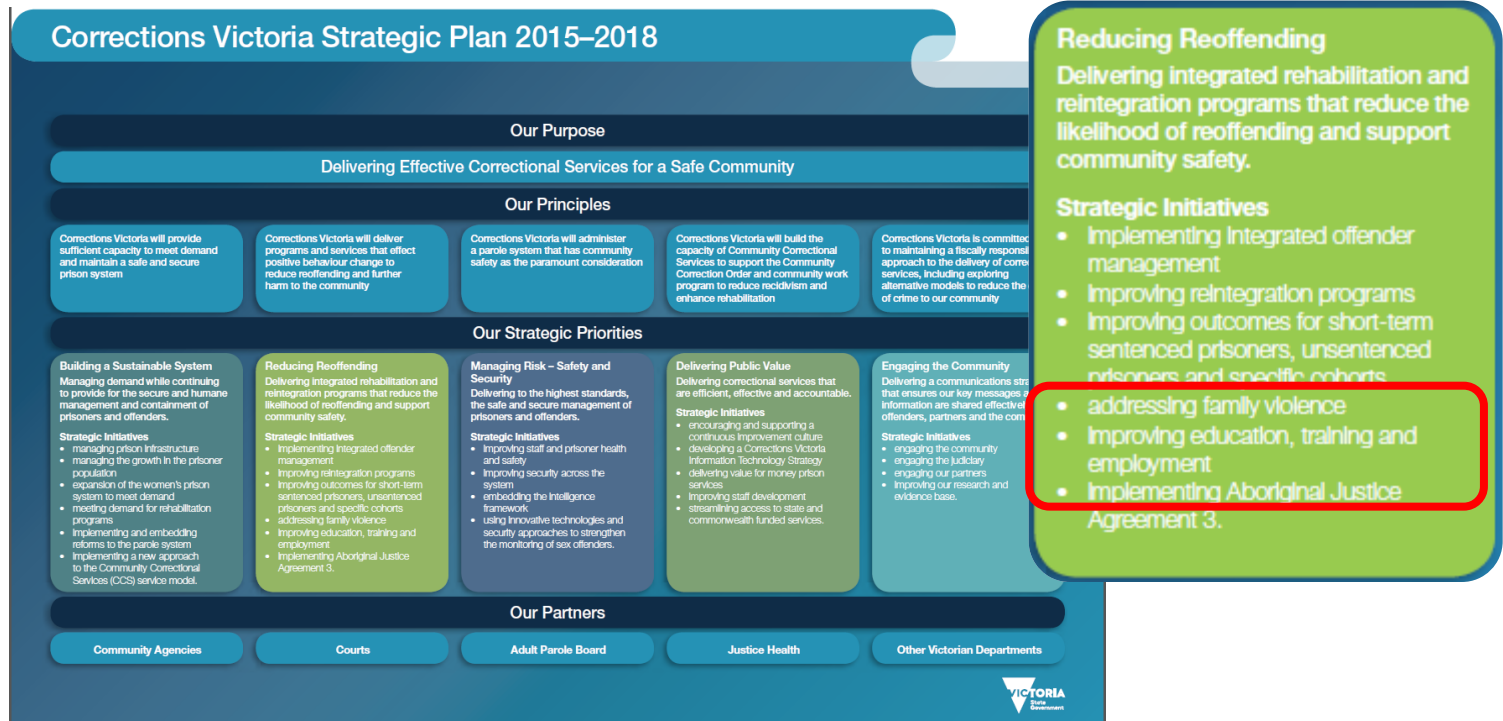
January 2017



Prisoner Statistics at 1 October 2017

Total	7182 (7.1% increase in 12 months)
Male	6678 (6.5% increase in 12 months)
Female	504 (15.9% increase in 12 months)
Male Sentenced	4,966 (69% of male population)
Male Unsentedenced	2,216
Female Sentenced	319 (63% of female population)
Female Unsentedenced	185

Corrections Victoria's Strategic Plan 2015-2018



- Improving Education Training and Employment
- Building a sustainable system and managing and strengthening prison infrastructure

Prisoner Employment Framework - Objectives

- Increase ex-prisoners' employment prospects and access to other socio-economic opportunities
- Maintain stable and safe prison environments that encourage prisoners' successful participation in education and training opportunities
- Assist prisoners develop personal capacity and life skills so they can function more effectively in society and are more employable
- Support ex-prisoners efforts to minimise employment-related barriers that are a consequence of their incarceration

Investment in Education

- \$78 million (2016 – 2020)
- \$112 million (2016 – 2022)
- \$16+ million Private Prisons
- \$x million Ravenhall (opening November 17)
- PAR 15%
- Bonus 5%



Service Delivery Model



- 102 Contractual Service Requirements – (alignment to ASQA - SRTOs)
- New Education and Training Quality Framework
- Comprehensive Feedback Process
- Evidence of good practice
- Innovation and continuous improvement

Education Providers



- Approach to market 2015
- 3 TAFE providers 2016 – 2020 (+2 yrs)
- Bendigo Kangan Institute
- Box Hill Institute
- Federation University Australia



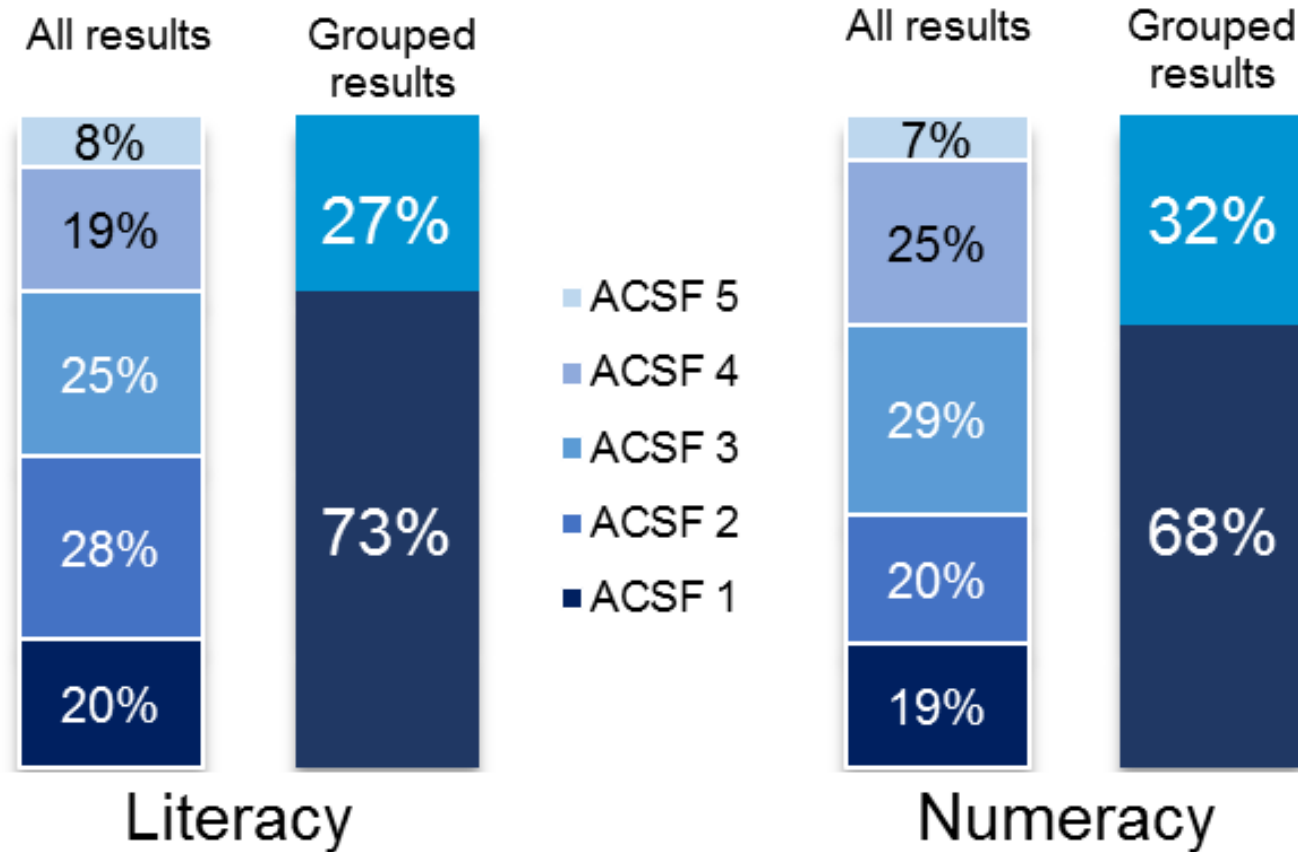
Service Delivery Model

- LLN Assessments
- Face to Face teaching
- Vocational Assessments
- Koori Tuition Support
- Mandatory OH&S
- On-the-Job Training (FSK)
- Prisoner Feedback

Language Literacy and Numeracy

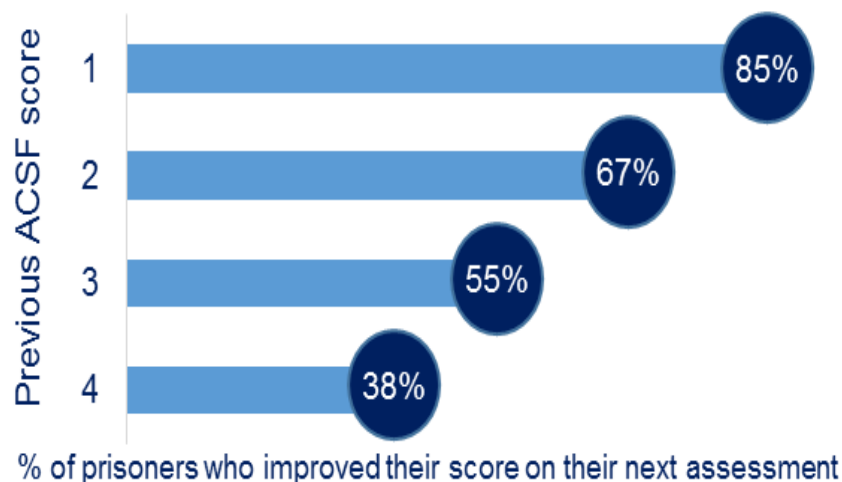
- LLN Assessments
- ACSF level 3 and below - targeted LLN support programs
- ACER Compass Tool – ACER Vocational Indicator Tool

LLNs (2016)



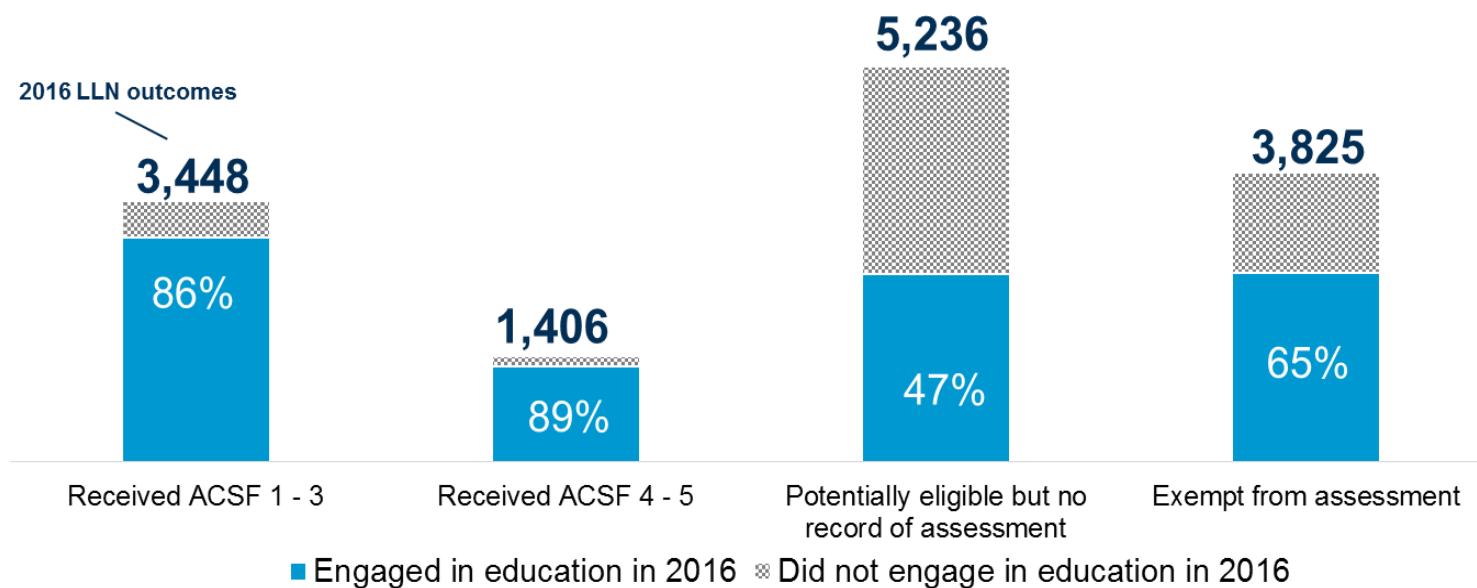
LLN Improvements

Improvements on subsequent assessments –
where the second assessment took place in 2016



Of all prisoners who achieved ACSF 1 on their initial assessment - 82% achieved ACSF 2 or greater on subsequent assessment

LLN and VET Engagement



Positive correlation between LLN assessment and engagement in education

VET Engagement

Relative to 13,915 unique prisoners in 2016

9,203

66%

Short term
engagement rate

*the number of unique
prisoners who registered
for at least one unit of
education within the
calendar year*

10,126

73%

Long term
engagement rate

*the number of unique
prisoners in 2016, who
registered for at least one
unit of education during
their current term of
imprisonment.*

3,275

34%

Long term
completion rate

*the number of unique
prisoners in 2016, who
successfully complete six or
more units during their
current term of
imprisonment.*

Deliverables 2016-17 (All prisons)

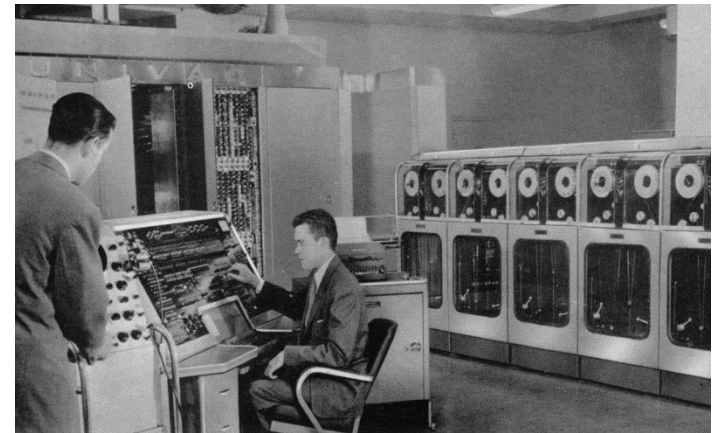
LLNs	5149
Vocational Assessments	3343
Learning Plan Reviews	1280
Foundation OH&S Sessions	310
Koori Tuition Support Hours	3275
Face-to-face Teaching Hours	70621

Future Directions



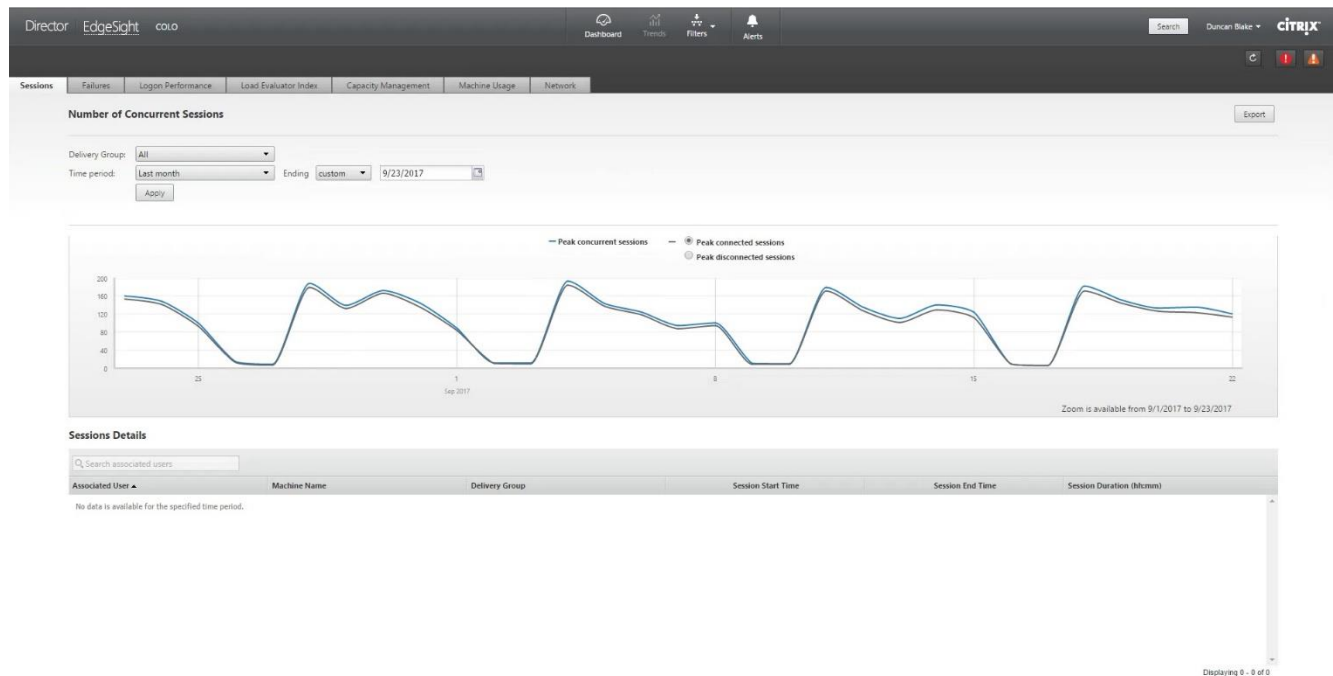
Future Directions – ICT Infrastructure

- PETES system
- \$2.7 million hardware
- 701 PETES terminals
- 166 PETES laptops
- 102 Wi-Fi points



PETES Utilisation

- In the past 7 days, 668 unique users have logged onto the system 1 or more times
- In the past 30 days, 1358 unique users have logged onto the system 1 or more times



Future Directions – Flexible Learning



- Wi-Fi connectivity
- In- cell learning
- High security units
- Greater choices
- Prisoner LMS (Moodle)
- Similar learning experience to community

Future Directions - Centres of Excellence

- Scoping “Centres of Excellence” 2018
- Construction – Loddon Precinct
- Remodelling education centres
- Regional employment brokers

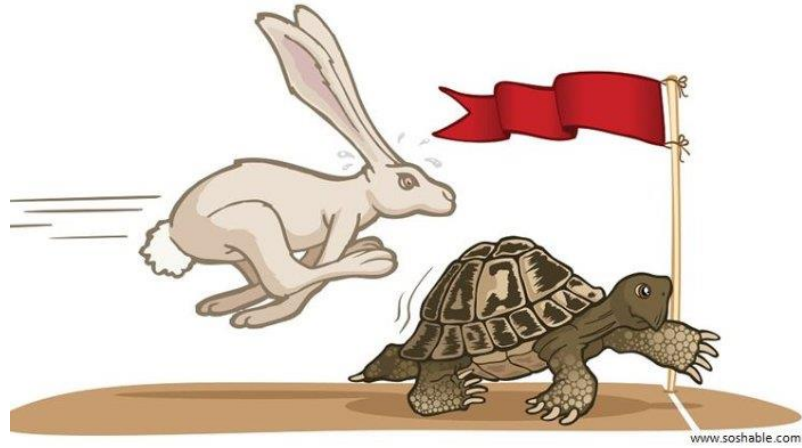


Future Directions – Community of Practice



- Drive innovation and continuous improvement
- Improve the quality of educational delivery
- Sharing of good practice
- Deliver system wide improvements and efficiencies
- What does the future look like?

Questions?



Justice Education Training System (JETS)

- 2 year development project
- Cloud hosted prisoner education data management system
- Prison and TAFE head office user access
- Records all student participation in education services (LLN scores, Learning Plans, enrolments, OH&S, Distance Ed etc.)

